

47-M35  
TYPE SPECIMEN  
P1/16

UPPER & LOWERCASE  
TEXT & DISPLAY SANS  
REGULAR

ILOTT-TYPE

47-M35

ilott-type.com  
ilottvintage.com  
info@ilottvintage.com  
© 2015-16 ILOTT Vintage

ABCDEFGHIJKLMNOPQRSTUVWXYZ  
abcdefghijklmnopqrstuvwxyz  
ÁÂÃÄÅ Æ Ç È É Ê Ë Ì Í Î Ï Ñ Ò Ó Ô Õ Ö Ø Ù Ú Û Ü Ý Þ ß à á â ã ä å æ ç è é ê ë ì í î ï ð ñ ò ó ô õ ö ø ù ú û ü ý þ ÿ  
á â ã ä å æ ç è é ê ë ì í î ï ð ñ ò ó ô õ ö ø ù ú û ü ý þ ÿ  
0123456789  
\* \ . : ; , ! # . ? ' " ; / \_ { } [ ] ( ) --- « » « ” ” ” ”  
¢ ¤ \$ € £ ¥ ÷ = ∞ - × % + ¶ | @ & ¶ © ® § ™ ° ^ † ‡  
ˆ ˇ ˘ ˙ ˚ ˛ ˜ ˝ ˞ ˟ ˠ ˡ ˢ ˣ ˤ ˥ ˦ ˧ ˨ ˩ ˪ ˫ ˬ ˭ ˮ ˯ ˰ ˱ ˲ ˳ ˴ ˵ ˶ ˷ ˸ ˹ ˺ ˻ ˼ ˽ ˾ ˿

47-M35  
TYPE SPECIMEN  
P3/16

UPPERCASE

A B C D E F G

H I J K L M N

O P Q R S T

U V W X Y Z

ILOTT-TYPE

ilott-type.com  
ilottvintage.com  
info@ilottvintage.com  
© 2015-16 ILOTT Vintage

80/95pt

47-M35  
TYPE SPECIMEN  
P4/16

LOWERCASE

a b c d e f g  
h i j k l m n  
o p q r s t  
u v w x y z

ILOTT-TYPE

ilott-type.com  
ilottvintage.com  
info@ilottvintage.com  
© 2015-16 ILOTT Vintage

80/95pt

47-M35  
TYPE SPECIMEN  
P5/16

FIGURES

ILOTT-TYPE

o 1 2 3 4 5 6 7 8 9

ilott-type.com  
ilottvintage.com  
info@ilottvintage.com  
© 2015-16 ILOTT Vintage

Lining/Proportional  
80pt

47-M35  
TYPE SPECIMEN  
P6/16

DIACRITICS

ILOTT-TYPE



47-M35  
TYPE SPECIMEN  
P7/16

PUNCTUATION  
& SYMBOLS

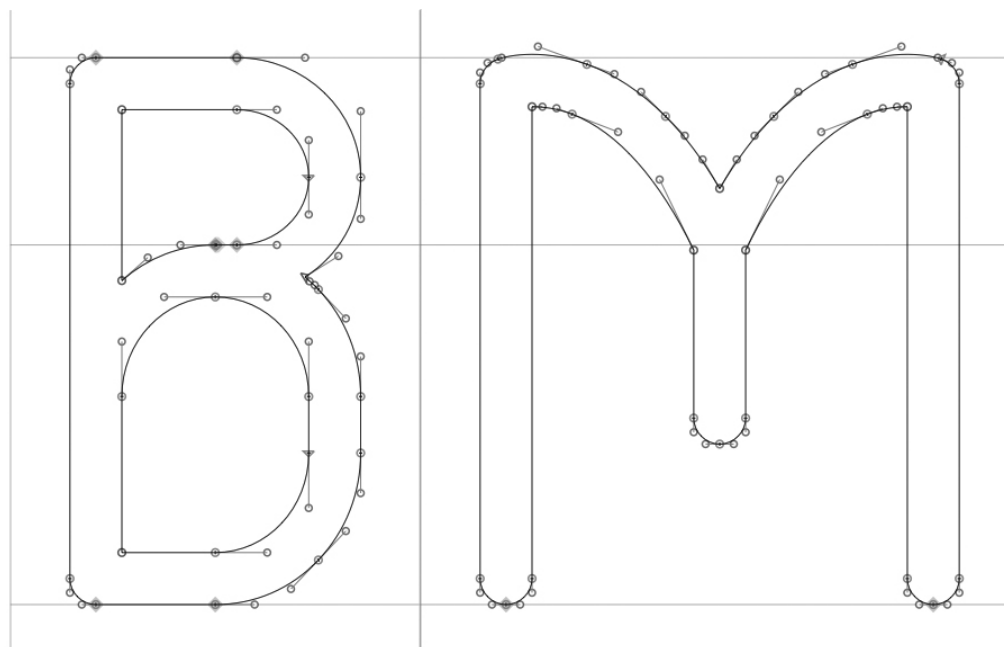
ILOTT-TYPE

\* \ · · : , . . . ! ! # . ? ¿ " " ' ; / \_ { } [ ] ( ) — — — « » ‹ › “ ” ‘ ’  
¢ ¤ \$ € £ ¥ ÷ = ∞ - × % + ◊ ¶ @ & ¶ © ® § ™ ° ^ † ‡

47-M35  
TYPE SPECIMEN  
P8/16

VECTOR PATHS

ILOTT-TYPE





47-M35  
TYPE SPECIMEN  
P9/16

SAMPLES

ILOTT-TYPE

On entering the miniature camera business, Chiyoda Kogaku had decided to make the frame size 24x32mm, a logical proposition at the time since most photo copies were made on paper closer to this format. The already established international standard was 36 images of 24x36mm. By doing so, a standard length of film yielded four more exposures on a 36-exposure load. The camera came with a decent Super Rokkor 45mm f/2.8 standard optic comprising five elements in three groups, including the front group of three cemented elements designed to secure sharp images on the small negative. When the camera appeared all engravings on the lens and on the slow-speed dial were oriented to be read from the front side of the camera. Later, at about serial no. 4000, they were turned to be read as one holds the camera for picture taking. Accessory mounted in the shoe on top of the camera is secured by a spring-loaded ball that sometimes mistakenly is assumed to be a flash synchroniser contact.

47-M35  
TYPE SPECIMEN  
P10/16

SAMPLES

ILOTT-TYPE

34.6939° N, 135.5022° E

ilott-type.com  
ilottvintage.com  
info@ilottvintage.com  
© 2015-16 ILOTT Vintage

36pt

47-M35  
TYPE SPECIMEN  
P11/16

SAMPLES

ILOTT-TYPE

Constable

ilott-type.com  
ilottvintage.com  
info@ilottvintage.com  
© 2015-16 ILOTT Vintage

100pt

47-M35  
TYPE SPECIMEN  
P12/16

SAMPLES

ILOTT-TYPE

Å å Æ æ Ü ü

ilott-type.com  
ilottvintage.com  
info@ilottvintage.com  
© 2015-16 ILOTT Vintage

150pt

47-M35  
TYPE SPECIMEN  
P13/16

SAMPLES

ILOTT-TYPE

Schönheit ist überall ein  
gar willkommener Gast

ilott-type.com  
ilottvintage.com  
info@ilottvintage.com  
© 2015-16 ILOTT Vintage

36/48pt

47-M35  
TYPE SPECIMEN  
P14/16

PUNCTUATION  
& SYMBOLS

ILOTT-TYPE

Rk®135™

ilott-type.com  
ilottvintage.com  
info@ilottvintage.com  
© 2015-16 ILOTT Vintage

110pt

47-M35  
TYPE SPECIMEN  
P15/16

INSPIRATION

ILOTT-TYPE



ilott-type.com  
ilottvintage.com  
info@ilottvintage.com  
© 2015-16 ILOTT Vintage

1947-c.1958

47-M35  
TYPE SPECIMEN  
P16/16

ILOTT-TYPE



Minolta-35

ilott-type.com  
ilottvintage.com  
info@ilottvintage.com  
© 2015-16 ILOTT Vintage