

64-SRC
TYPE SPECIMEN
P1/19

UPPER & LOWERCASE
MONOSPACE
REGULAR
LIGHT
INK
+ OBLIQUES

ILOTT-TYPE

64 - SRC

ilott-type.com
ilottvintage.com
info@ilottvintage.com
© 2015-16 ILOTT Vintage

64-SRC
TYPE SPECIMEN
P3/19

UPPERCASE

A B C D E F G
H I J K L M N
O P Q R S T
U V W X Y Z

ILOTT-TYPE

ilott-type.com
ilottvintage.com
info@ilottvintage.com
© 2015-16 ILOTT Vintage

Regular
72/86pt

64-SRC
TYPE SPECIMEN
P4/19

LOWERCASE

abcdefghijklmnop
ghijklmnop
qrstuvwxyz

ILOTT-TYPE

ilott-type.com
ilottvintage.com
info@ilottvintage.com
© 2015-16 ILOTT Vintage

Regular
72/86pt

64-SRC
TYPE SPECIMEN
P5/19

FIGURES

ILOTT-TYPE

0123456789

ilott-type.com
ilottvintage.com
info@ilottvintage.com
© 2015-16 ILOTT Vintage

Regular
Non-Lining/Tabular
62pt

64-SRC
TYPE SPECIMEN
P6/19

UPPERCASE
ALL STYLES

ABCDEFGH
IJKLMNOP
OPQRST
UVWXYZ

ABCDEFGH
IJKLMNOP
OPQRST
UVWXYZ

ABCDEFGH
IJKLMNOP
OPQRST
UVWXYZ

ILOTT-TYPE

ABCDEFGH
IJKLMNOP
OPQRST
UVWXYZ

ABCDEFGH
IJKLMNOP
OPQRST
UVWXYZ

ABCDEFGH
IJKLMNOP
OPQRST
UVWXYZ

ilott-type.com
ilottvintage.com
info@ilottvintage.com
© 2015-16 ILOTT Vintage

Clockwise from top left
Light / Regular / Ink / Light Oblique / Oblique / Ink Oblique
21/25pt

64-SRC
TYPE SPECIMEN
P7/19

LOWERCASE
ALL STYLES

ILOTT-TYPE

abcdefg
hijklmn
opqrst
vwxyz

abcdefg
hijklmn
opqrst
vwxyz

abcdefg
hijklmn
opqrst
vwxyz

abcdefg
hijklmn
opqrst
vwxyz

abcdefg
hijklmn
opqrst
vwxyz

abcdefg
hijklmn
opqrst
vwxyz

ilott-type.com
ilottvintage.com
info@ilottvintage.com
© 2015-16 ILOTT Vintage

Clockwise from top left
Light / Regular / Ink / Light Oblique / Oblique / Ink Oblique
21/25pt

64-SRC
TYPE SPECIMEN
P8/19

FIGURES
ALL STYLES

ILOTT-TYPE

0123456789
0123456789
0123456789
0123456789
0123456789
0123456789

ilott-type.com
ilottvintage.com
info@ilottvintage.com
© 2015-16 ILOTT Vintage

Top to bottom
Light / Regular / Ink / Light Oblique / Oblique / Ink Oblique
46/54pt

64-SRC
TYPE SPECIMEN
P9/19

DIACRITICS

ILOTT-TYPE

ˆ ˇ ˘ ˙ ˚ ˛ ˜ ˝ ˆ ˜
˛ ˜

PUNCTUATION
& SYMBOLS

ILOTT-TYPE

* \ · ● : , ... ¡ ! # . ? ¿ ” ” ; / _
{ } [] () - - - « » < > “ ” ‘ ’
¢ ¤ \$ € £ ¥ ≈ ~ ÷ ø = > ≥ ∞ ∫ < ≤ ¬ × ≠
∂ ‰ ‹ ± ∓ √ ∑ ∏ ∣ ∥ ∆ ∇ © ® § ™ ° ∆ † ‡

64-SRC
TYPE SPECIMEN
P11/19

UNIQUE
DOUBLES
SPACE
CHARACTERS

ILOTT-TYPE

1234

AaBb

Mm

Ww

Æ æ

Œ œ

Monospace

Unique Doublespace
Characters

ilott-type.com
ilottvintage.com
info@ilottvintage.com
© 2015-16 ILOTT Vintage

Ink
57/60pt

Light
14/19pt

64-SRC
TYPE SPECIMEN
P12/19

SAMPLES

ILOTT-TYPE

Arthur C. Clarke

“Behind every man now alive stand thirty ghosts, for that is the ratio by which the dead outnumber the living. Since the dawn of time, roughly a hundred billion human beings have walked the planet Earth.

Now this is an interesting number, for by a curious coincidence there are approximately a hundred billion stars in our local universe, the Milky Way. So for every man who has ever lived, in this Universe there shines a star.

But every one of those stars is a sun, often far more brilliant and glorious than the small, nearby star we call the Sun. And many--perhaps most--of those alien suns have planets circling them. So almost certainly there is enough land in the sky to give every member of the human species, back to the first ape-man, his own private, world-sized heaven--or hell.

How many of those potential heavens and hells are now inhabited, and by what manner of creatures, we have no way of guessing; the very nearest is a million times farther away than Mars or Venus, those still remote goals of the next generation. But the barriers of distance are crumbling; one day we shall meet our equals, or our masters, among the stars.

Men have been slow to face this prospect; some still hope that it may never become reality. Increasing numbers, however are asking; ‘Why have such meetings not occurred already, since we ourselves are about to venture into space?’

Why not, indeed? Here is one possible answer to that very reasonable question. But please remember: this is only a work of fiction.

The truth, as always, will be far stranger.”

64-SRC
TYPE SPECIMEN
P13/19

SAMPLES

ILOTT-TYPE

K M Q 1 3 4 TM

à ◊ ¶ § € & % *

© ® • ○ ● ÷ ’

64-SRC
TYPE SPECIMEN
P14/19

SAMPLES

ILOTT-TYPE

On February 23, 1965, a press
release announced the title
Journey Beyond The Stars.
Other titles considered include
Universe, Tunnel to the Stars,
and *Planetfall*.

64-SRC
TYPE SPECIMEN
P15/19

SAMPLES

ILOTT-TYPE

Hrál dlouze na hoboj,
v tmách na pobřeží,
v tmách,
na plochem pobřeží,
kde nikdo nepřistál:
hrál pro svou Lhostejnost,
či hrál spíš pro svůj Strach?
byl tichý Pastevec,
či vyděděný Král?

KAREL HLAVÁČEK:
HRÁL KDOSI NA HOBOJ

64-SRC
TYPE SPECIMEN
P16/19

SAMPLES

ILOTT-TYPE

Ink *Bleeds*

ilott-type.com
ilottvintage.com
info@ilottvintage.com
© 2015-16 ILOTT Vintage

Ink / Ink Oblique
78pt

64-SRC
TYPE SPECIMEN
P17/19

SAMPLES

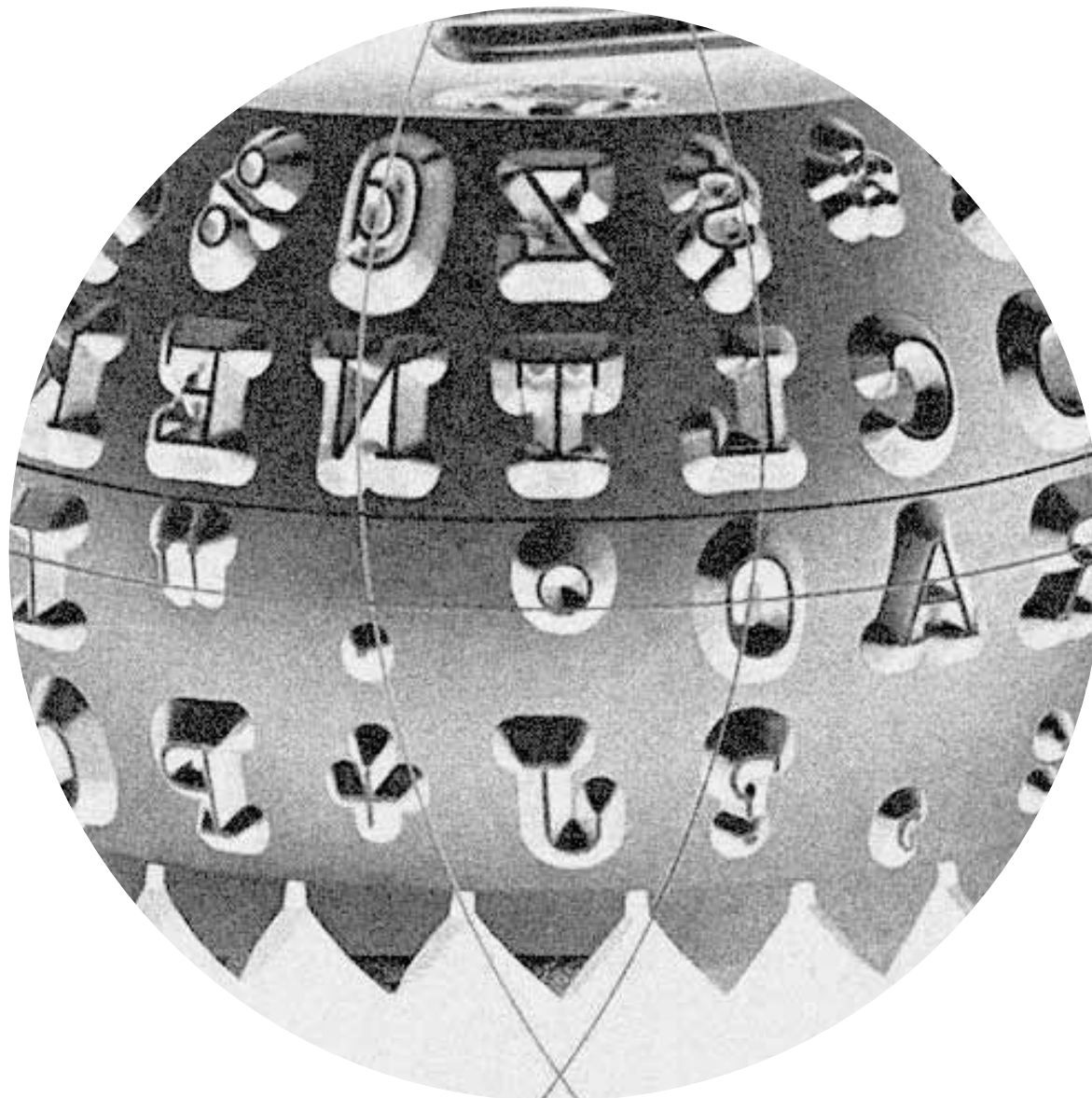
ILOTT-TYPE

Paperback:	296 pages
Language:	English
ISBN-10:	0451457994
ISBN-13:	978-0451457998
Dimensions:	4.2 x 0.8 x 6.8 inches
Weight:	3.2 ounces

64-SRC
TYPE SPECIMEN
P18/19

INSPIRATION
2001/ *Selectrics*

ILOTT-TYPE



ilott-type.com
ilottvintage.com
info@ilottvintage.com
© 2015-16 ILOTT Vintage

c.1964

64-SRC
TYPE SPECIMEN
P19/19

ILOTT-TYPE



2001/SELECTRICS

ilott-type.com
ilottvintage.com
info@ilottvintage.com
© 2015-16 ILOTT Vintage